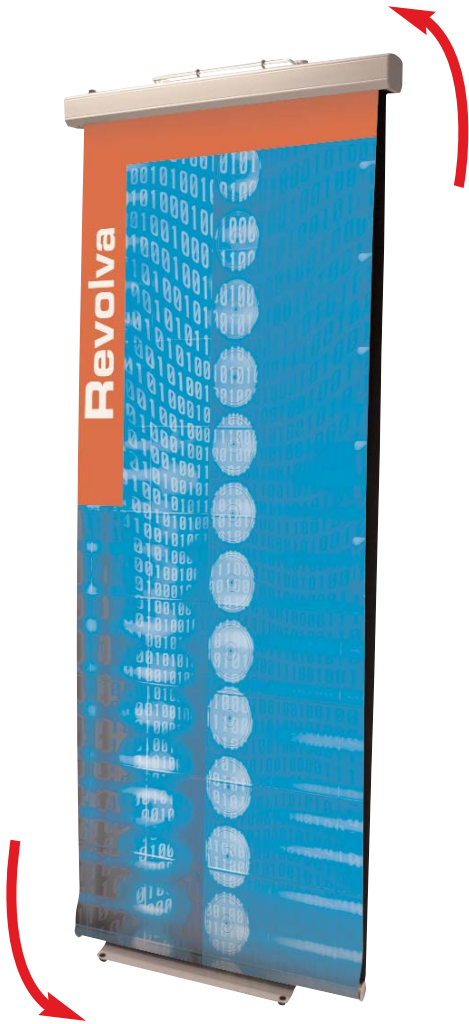


# Revolve Rotary Banner

UB641



Give your promotion maximum impact with this stylish and eye-catching motorised banner.

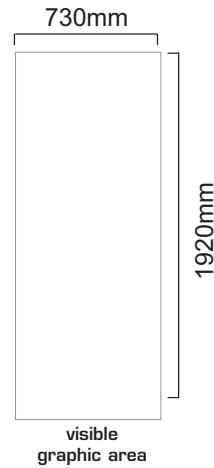
## features & benefits

- Scrolling loop graphic - scrolls up or down
- Free standing aluminium frame
- Includes 12v power adaptor and carry bag
- Available in silver
- 3840mm (h) x 730mm (w) wide looped graphic, 1920mm (h) max approx visible area
- Telescopic support poles allow for height adjustments



### Graphic Finishing Notes:

Graphic should be 'butt' joined to create the loop required with no overlap. The butt joint should be completed with a diagonal cut tapering down by approx 20mm over the width of the graphic. The diagonal join is recommended as this helps the graphic negotiate the rollers when the unit is in use. Join the free ends using 2" (50mm) wide sellotape or similar thin single sided adhesive tape, sticking onto the inside of the loop.

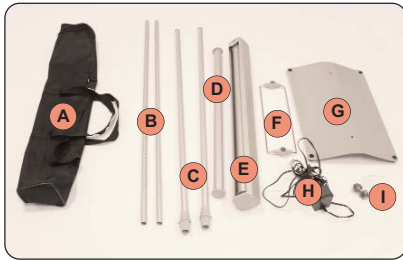


hardware specifications	graphic specifications	additional info
<p>Hardware Dimensions (mm) 2080 (h) x 805 (w) x 318 (d)</p> <p>Weight: 5.5kg approx (including carry bag)</p>	<p>Visible Graphic Dimensions (mm): 1920 (h) max x 730 (w)</p> <p>Actual Graphic Dimensions (mm): 3840 (l) x 730 (w)</p>	<p>Included in kit: Carry bag, 2 x top poles, 2 x bottom poles, bottom roller, driver unit (and top roller), driver support, base, transformer, 2 x screw fasteners</p> <p>Availability: Silver</p>

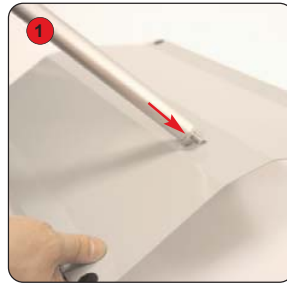
**NB** - It is recommended that graphics are transported in a separate tube to ensure they do not become damaged. The graphic material should be as flexible as possible, 150 micron polyester film is recommended.

We are continually improving and modifying our product range and reserve the right to vary the specifications without prior notice. All dimensions and weights quoted are approximate and we accept no responsibility for variance. E&OE.

# Assembly Instructions



Kit includes: Carry bag (a), 2 x top poles (b), 2 x bottom poles (c), bottom roller (d), driver unit (and top roller - e), driver support (f), base (g), transformer (h), screw x 2 (i)



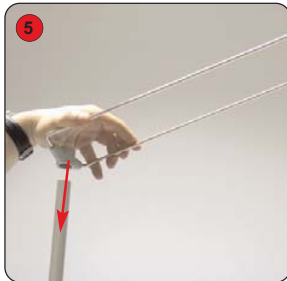
1 Take the bottom pole (C) and slot the threaded end through one of the holes in the base (G).



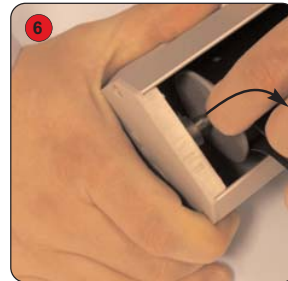
2 Secure the pole to the base using screw (I) Tighten into position. Repeat for the second bottom pole.



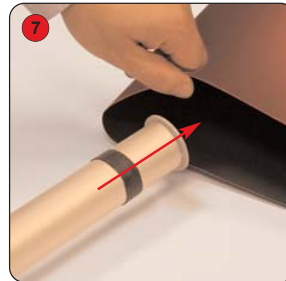
3 Slot a top pole (B) into top of each bottom pole, and secure into position by tightening the fitting.



5 Fit the driver support (F) over the top of each pole with the rounded edges facing up.



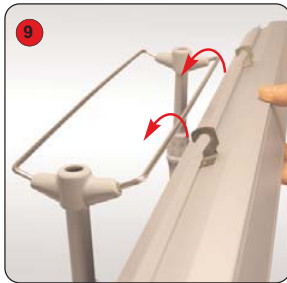
6 Remove the top roller from the driver unit (E) by pushing one end into the unit and then lifting out.



7 Insert the top roller into the top loop of the graphic.



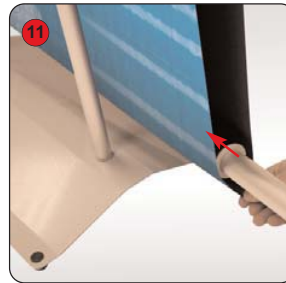
8 Insert the roller back into driver unit ensuring that the 'keyhole' shaped end of roller is at on/off switch end of the unit.



9 Suspend the top driver unit from the driver support.



10 Adjust height of graphic if necessary by repeating step 4.



11 Insert the bottom roller through the bottom loop of the graphic.



12 Plug the transformer into the top of the driver unit and switch on.



Other products in our rotary and display banner range include:



## Maverick

Floor standing rotary banner, visible area of 1930mm (h) x 780mm (w), large aluminium base for extra stability



## Hercules

Floor standing rotary banner, larger visible area than the Maverick and larger footprint. 2015m (h) x 850mm (w) approx. visible area



## Zodiac

Wall or ceiling mounted rotary banner system with scrolling loop graphic and visible area up to 2000mm.